

# Irgalite® Red L 3865

(old: Irgalite® Red 3RS)

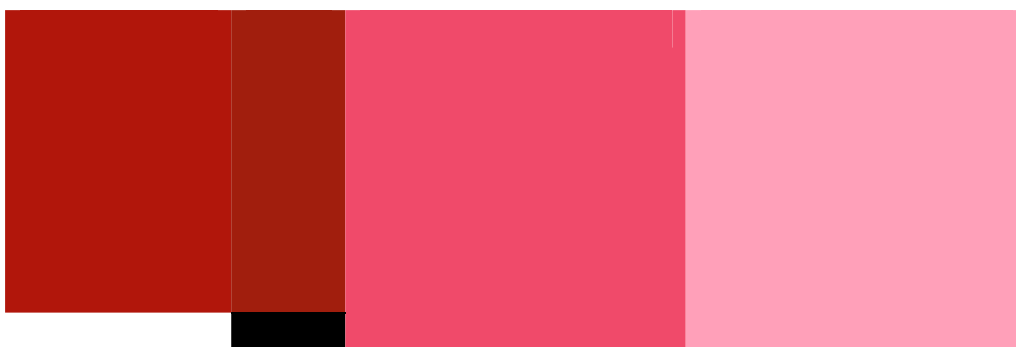


## for application in coatings

mid-shade red with high brilliance and good opacity

**Colour Index** Pigment Red 112 | 12370

**chemical nature** Naphthol AS red



full shade	1/3 standard depth of shade 1:4.0 TiO <sub>2</sub>	1/9 standard depth of shade 1:16.9 TiO <sub>2</sub>
------------	---	--

<b>fastness to weathering</b>	alkyd/melamine	acrylic/melamine
full shade	4	4
1/3 standard depth of shade	3 – 4	3 – 4
1/9 standard depth of shade	3	3

<b>suitability for industries</b>					
<b>automotive</b>	<b>general industrial</b>	<b>coil</b>	<b>powder</b>	<b>wood</b>	<b>decorative</b>
<input type="radio"/>	<input checked="" type="radio"/>	<input type="radio"/>	<input type="radio"/>	<input type="radio"/>	<input checked="" type="radio"/>

<b>suitability for applications</b>					
<b>baking finishes</b>	<b>water-based</b>	<b>acrylic/isocyanate</b>	<b>acid-curable</b>	<b>amine-curable</b>	<b>air-drying</b>
<input checked="" type="radio"/>	<input checked="" type="radio"/>	<input type="radio"/>	<input type="radio"/>	<input type="radio"/>	<input checked="" type="radio"/>

**explanation of symbols** ● suitable ○ potentially suitable ○ not suitable

## physical data of the pigment

<b>bulk volume</b> 4.7 l/kg	<b>conductivity</b> < 200 µS/cm	<b>density (20 °C [68 °F])</b> 1.49 g/cm <sup>3</sup>	<b>dry content</b> ≥ 98.5 %
<b>oil absorption</b> 45 g/100 g	<b>specific surface</b> 24 m <sup>2</sup> /g	<b>thermal resistance</b> 160 °C (320 °F)	

**fastness to solvents****butyl acetate**

1

**ethanol**

2

**methylethyl ketone**

1

**water**

5

**white spirit**

3

**xylene**

1

**resistance of the pigment in coatings****acid (2 % HCl)**

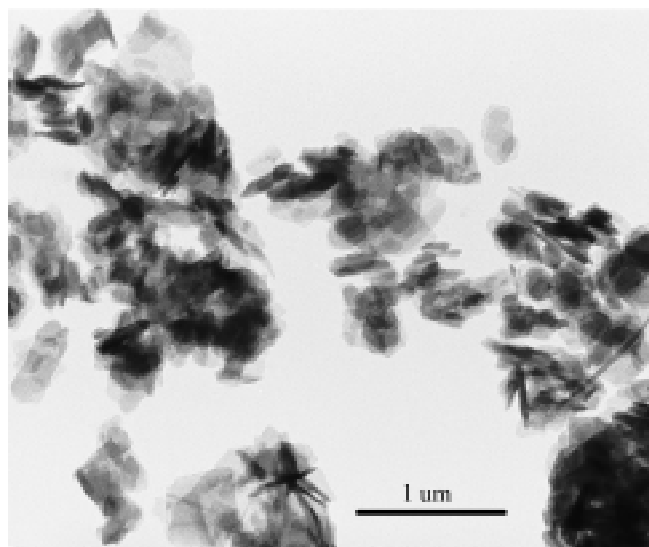
5

**alkali (2 % NaOH)**

4

**overcoating**

1



electron microscopy

Please contact your BASF sales representative for more information on the test methods applied.

The proximity of the demonstrated shades to the original hues depends on the settings and calibration of the equipment used (monitor, printer).

**Safety**

When handling this product, please comply with the advice and information given in the safety data sheet and observe protective and workplace hygiene measures adequate for handling chemicals.

It cannot be ruled out that this product contains particles < 0.1 µm.

**Note**

The data contained in this publication are based on our current knowledge and experience. In view of the many factors that may affect processing and application of our product, these data do not relieve processors from carrying out their own investigations and tests; neither do these data imply any guarantee of certain properties, nor the suitability of the product for a specific purpose. Any descriptions, drawings, photographs, data, proportions, weights, etc. given herein may change without prior information and do not constitute the agreed contractual quality of the product. The agreed contractual quality of the product results exclusively from the statements made in the product specification. It is the responsibility of the recipient of our product to ensure that any proprietary rights and existing laws and legislation are observed.

® = registered trademark, ™ = trademark of the BASF Group, unless otherwise noted

BASF SE  
 Pigments & Resins Europe  
 67056 Ludwigshafen, Germany  
[www.basf.com/pigment](http://www.basf.com/pigment)  
[service-edc@basf.com](mailto:service-edc@basf.com)